

K

B

Invitation to KBSI

What's



your



dream?

S



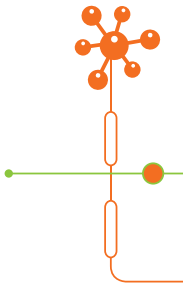
I

Since its foundation in 1988, KBSI has established and been operating large-scale cutting edge research equipment that is regarded as the best equipment in the world. It performs research support and collaboration for researchers at various universities, corporations, private research institutes and government research institutes.

It promotes happiness and safety of citizens by developing analytical research equipment with high rate of dependence on imports and resolving national and social problems.

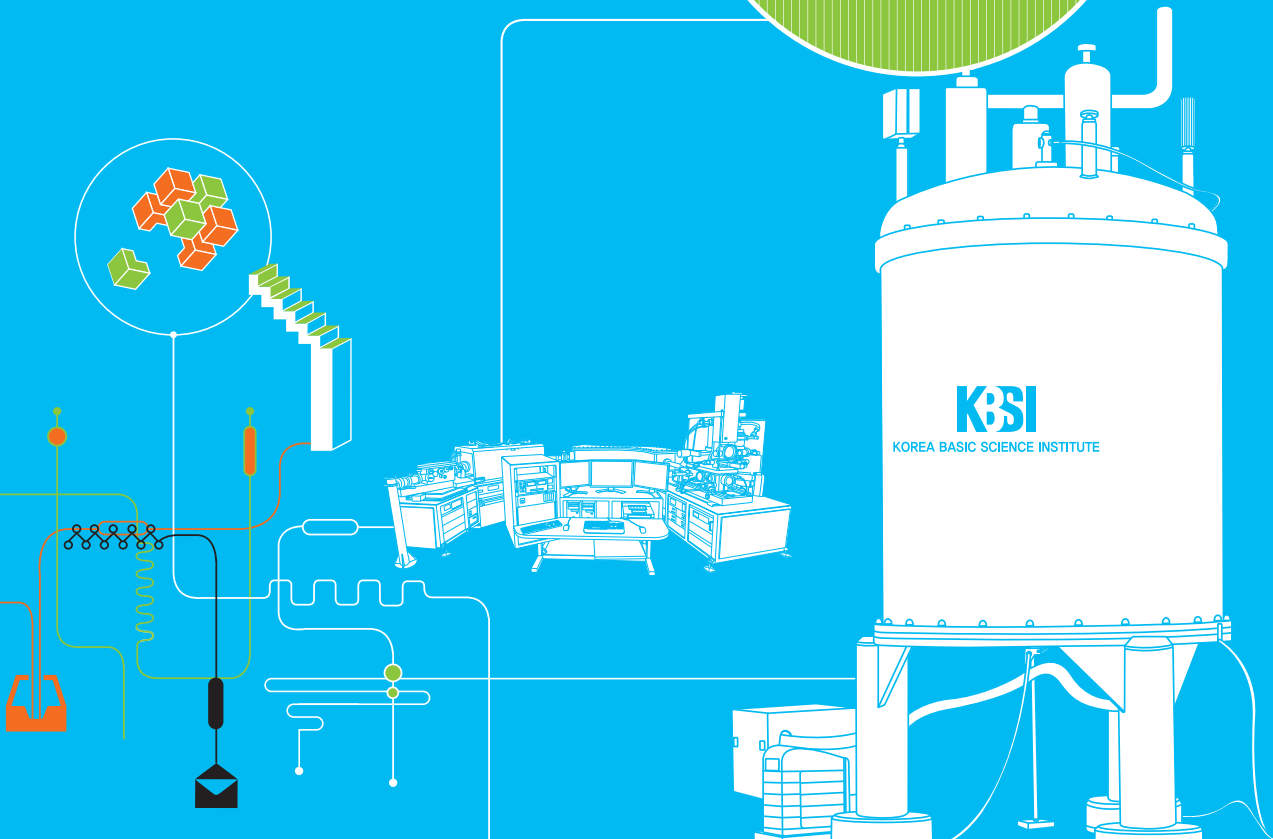
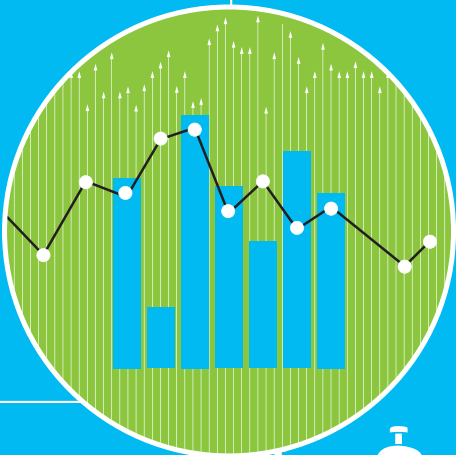
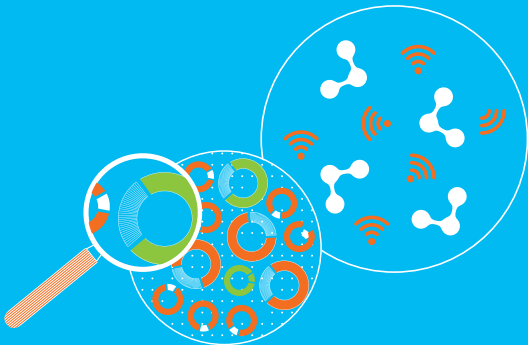
We invite those who are dreaming of making global research outcome through basic science research.

Open World-class Research Platform, KBSI





KBSI will realize
your dream,
The workplace that
you have been
dreaming of.

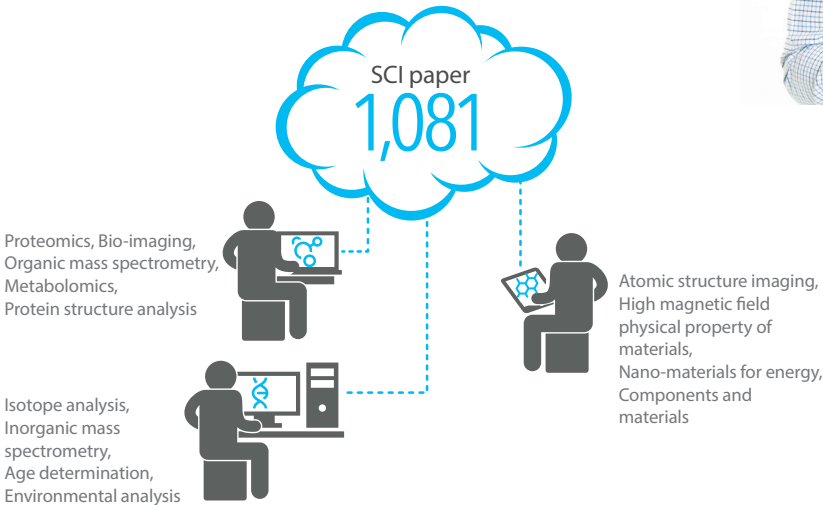
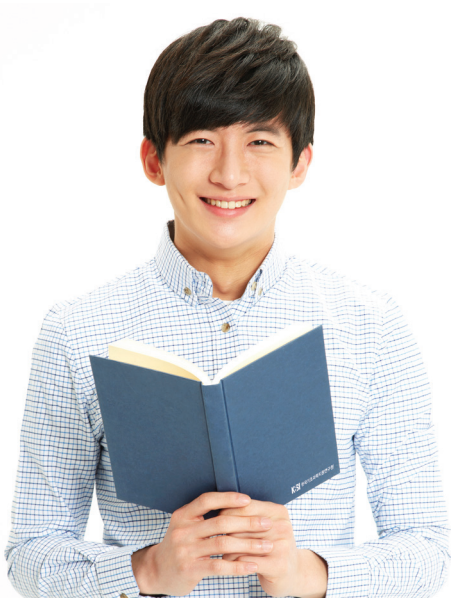


where

Which research institute can I consider for my field of research?

KBSI conducts convergence research from various fields including BT, NT and ET.

World-class researchers are working on advanced scientific research, and we have achieved 1,081 SCI papers published, including high-profile journals such as Nature, as a result of joint research in 2013.

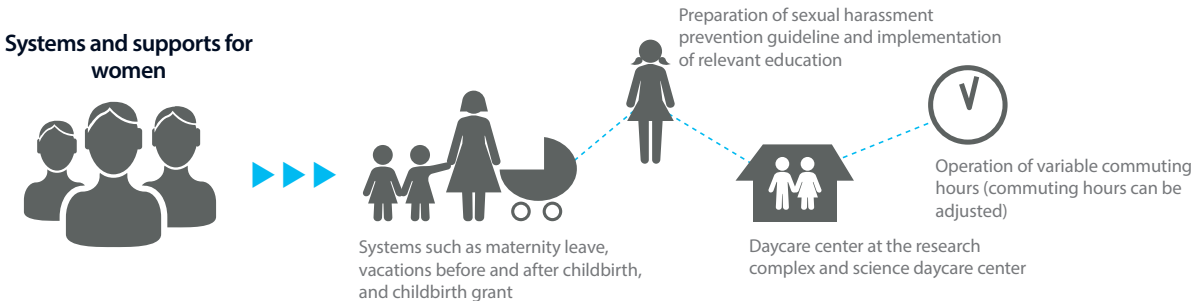


welfare

How is the welfare system compared to optimal research environment?

KBSI supports annual health examination on its employees and also provides fitness center in the building.

Furthermore, KBSI is running financial aid for a tuition, flexible benefit plan and staff council to consider difficulties of employees and provides the best working conditions.



Introduction to the procedure and application eligibility

Recruitment System	
Recruitment Method	General open competitive examination
Occupation Type	Researcher, Technician, Administrator
Place of Work	Daedoeok Headquarters, Ochang Headquarters and 10 regional centers (Seoul, Busan, Daegu, Gwangju, Jeonju, Chuncheon, Suncheon, Gangneung, Jeju, Western Seoul)
Eligibility for Application	Who is legally authorized to work in Korea
Recruitment Procedure	<div>Document Screening</div> <div>Evaluation on Research Seminar</div> <div>Personality Interview</div>
Recipient	(305-806) General Affairs Team, Korea Basic Science Institute, 169-148, Gwahak-ro, Yuseong-gu, Daejeon, Korea Inquiries - Phone: +82-42-865-3531 E-mail: khkim1@kbsi.re.kr Web site: www.kbsi.re.kr



Research Environment at KBSI

Is it possible to conduct global research without research equipment?

As a basic science research institute, KBSI has cutting edge research equipment and performs research support and joint research. In addition, it possesses about 180 analytical equipment to provide analysis services to universities, research institutes and businesses. You can obtain the best research outcome under optimal environment with equipment owned by the institute.

▼▼▼ National large-scale research equipment in operation



High Voltage Transmission aElectron Microscope (HVEM)



High-field Nuclear Magnetic Resonance (900 MHz NMR)



Fourier Transform Ion Cyclotron Resonance Mass Spectrometer (FT-ICR MS)

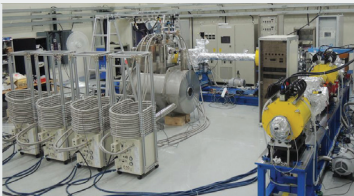


High Resolution Secondary Ion Mass Spectrometer (HR-SIMS)

▼▼▼ National large-scale research equipment under installation



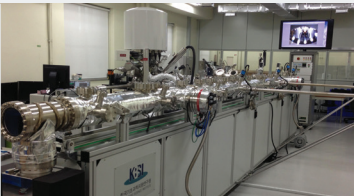
7 T Human MRI (to be available in 2014)



ECR Particle Beam Device (to be available in 2014)



Super-Bio High Voltage Electron Microscope (to be available in 2015)



Multi-disciplinary in-situ analytical system for nanotechnology (to be available in 2016)



HYUN JAE KYUNG

Interview with a researcher at Division of Electron Microscopic Research



Hyun, Jae-Kyung

- Affiliation** Division of Electron Microscopic Research
- Area** Operation of cryo-TEM and development of analytic techniques for high resolution protein structure determination
- History**
- Ph. D in Biological Sciences at University of Auckland
 - Senior researcher at KBSI (present)

What are your research topics and how do you feel about KBSI as a workplace?

I use transmission electron microscope to examine 3-dimensional structure of protein complex at molecular level. While attending graduate school and obtaining Ph. D at University of Auckland, I studied structure and assembly of capsid (protective shell) protein that originate from various viruses. I still focus on a similar research subjects, and also trying to develop new analytical methods and component devices for electron microscope-mediated structural biology.

While working at KBSI for 3 years, I have been extremely satisfied with the working conditions because the institute provides majority of research equipment needed for my research. In particular, as the experts in electron microscope are gathered around within the department for internal research collaboration, I can share various know-hows and ideas with the others. The institute offers analysis service using advanced research equipment, and it allows for smooth joint research with external institutions in the relevant fields. Above all, this place has talented researchers in the fields of BT, NT and ET for convergence research. KBSI surely has merits for researchers as they can easily exchange opinions and set forth their research directions.

66

As the experts in electron microscope are gathered around within the department for internal research collaboration, I can share various know-hows and ideas with the others.

99



BANG GEUL

Interview with female scientists and researchers



Bang, Geul

- Affiliation** Division of Mass Spectrometry Research
- Area** Operation of MALDI-TOF mass analysis equipment
- History** Masters degree in Basic Science at Graduate School of Analytical Science and Technology

What are the advantages of working at KBSI as a female scientist?

I have not experienced it myself as I am not married yet, but overall research environment is very stable and nice for female scientists, especially for married women. Our institute seems to always be concerned about systems and other matters for women. I personally think that the director of our institute is more interested in female scientists since she is a woman. I have no worries about keeping my job while taking care of child in the future.

66

I have no worries about keeping my job while taking care of child in the future.

99





KIM HYUN MIN

Interview with female scientists and researchers



Kim, Hyun Min

Affiliation Division of Magnetic Resonance Research
Area Operation of MRI equipment and synthesis of contrast medium
History Masters degree in Analytical Science at Graduate School of Analytical Science and Technology

Where did you learn about KBSI? How did you prepare to enter KBSI?

As I studied at Graduate School of Analytical Science and Technology, I was always interested in the field of bio-imaging. While I was anxious about my career choice with the passion for learning and better research environment, I came to learn about a research institute called KBSI.

I believe that the institute offers an optimal environment for my learning because it provides advanced equipment I need for the research. I did my best to produce outstanding research papers to get hired KBSI.

66

I believe that the institute offers an optimal environment for my learning because it provides advanced equipment I need for the research

99



PARK MIN SOON

Interview with technician in charge of international co-operation



Park, Min Soon

Affiliation Division of Interuational & Public Relations
Area International cooperation
History Masters degree in Business Administration at Seoul National University

As a person who works on international cooperation, how would you like to describe the status of KBSI in overseas and give motivation to applicants who wish to join the institute?

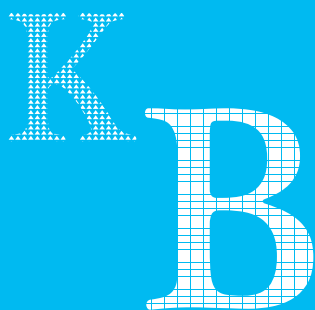
Despite the amicable and positive feelings of the term international cooperation, international cooperation is in fact a type of 'business' that only occurs when mutual benefit of parties involved is presumed. This is a relationship formed by two different nations with comparative advantage over the other on a resource (research capability) to combine their advantages for an outstanding outcome (research performance) that cannot be achieved alone. KBSI, a professional analysis institute with national research equipment, not only offers excellent research environment but allows for joint research on various fields with competent researchers. As you can see on our web site, the international cooperation network of KBSI is the barometer that shows how such capacity of KBSI is evaluated overseas. KBSI is not the world's best research institute as of now, but it definitely has distinct attractiveness to researchers. I am convinced that researchers who attracted to this aspect will be able to accomplish what they want at KBSI.

66

As you can see on our web site, the international cooperation network of KBSI is the barometer that shows how such capacity of KBSI is evaluated overseas.

99





Open KBSI, With KBSI!

Science for happiness
with KBSI

